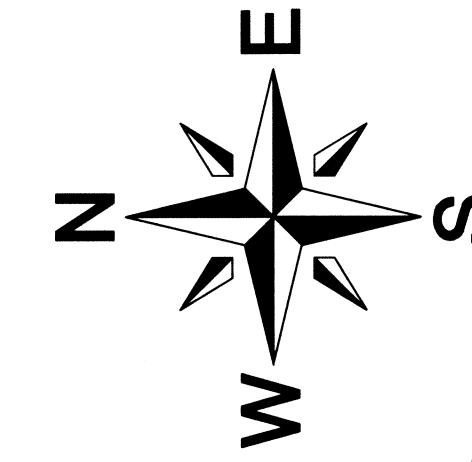


SITE PLAN

BEING PART OF THE SW1/4 OF THE NW1/4 AND THE NW1/4 OF THE SW1/4,
SECTION 2, T. 11 N., R. 5 E., TOWN OF FREEDOM, SAUK COUNTY, WISCONSIN.



SCALE: 1" = 40'

BASIS OF BEARINGS: IS THE E-W 1/4 LINE, SECTION 2, WHICH IS ASSUMED TO BEAR N89°51'25"E.

LEGEND

- 3/4" IRON ROD FND.
- AXLE SHAFT FND.
- 1" IRON PIPE FND.
- 1 1/4" IRON PIPE FND.
- 2" IRON PIPE FND.
- SAUK CO. MON. FND.
- SEPTIC VENT
- SEPTIC TANK
- SEPTIC CLEAN OUT
- MANHOLE
- FLAG POLE
- R.R. CROSSING POST
- R.R. SWITCH
- R.R. SWITCH BOX
- LIGHT POLE
- POWER POLE
- SIGNAL POLE
- GUY WIRE
- ELECTRIC BOX
- ELECTRICAL CONDUIT BOX
- TELEPHONE PEDESTAL
- ELECTRICAL OUTLET
- TYPICAL SOIL BORING
- AIR CONDITIONER
- GAS METER
- WATER BUBBLER
- WELL
- FURNACE EXHAUST
- OVERHEAD ELECTRIC
- FENCE LINE
- ▨ GRAVEL SURFACE
- ▨ ASPHALT SURFACE
- ▨ CONCRETE SURFACE
- ▨ BRICK SURFACE
- () RECORD INFORMATION

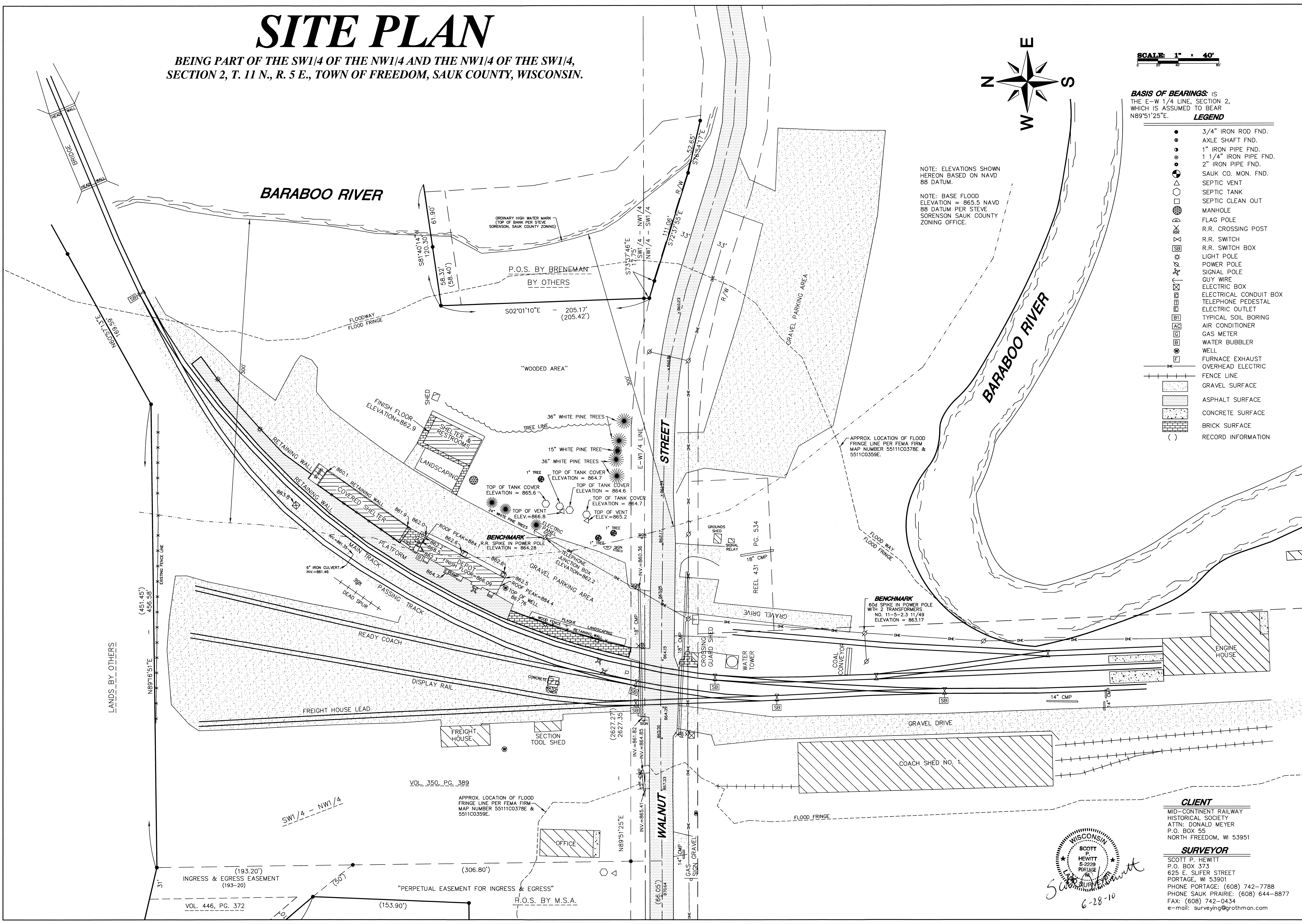
NOTE: ELEVATIONS SHOWN HEREON BASED ON NAVD 88 DATUM.

NOTE: BASE FLOOD ELEVATION = 865.5 NAVD 88 DATUM PER STEVE SORENSON SAUK COUNTY ZONING OFFICE.

APPROX. LOCATION OF FLOOD FRINGE LINE PER FEMA FIRM MAP NUMBER 55111C0378E & 5511C0359E.

BENCHMARK 604 SPIKE IN POWER POLE WITH 2 TRANSFORMERS NO. 11-5-2.3 11/49 ELEVATION = 863.17

APPROX. LOCATION OF FLOOD FRINGE LINE PER FEMA FIRM MAP NUMBER 55111C0378E & 5511C0359E.



CA GROTHMAN & ASSOCIATES S.C.
LAND SURVEYORS
625 EAST SLIFER STREET, P.O. BOX 373 PORTAGE, WI. 53901
PHONE: PORTAGE: (608) 742-7788 SAUK: (608) 644-8877
FAX: (608) 742-0434 E-MAIL: surveying@grothman.com

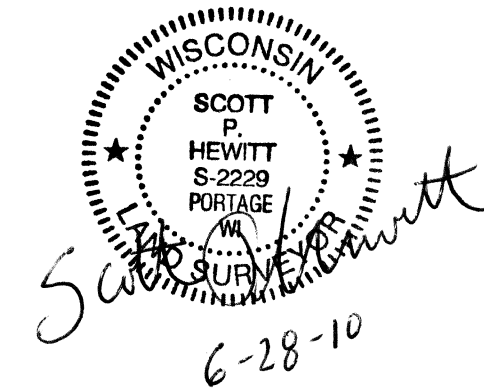
NO.	DATE	REVISION	BY	CHKD	SHEET	OF
					1	1

SITE PLAN FOR
MID-CONTINENT RAILWAY HISTORICAL SOCIETY
TOWN OF FREEDOM
SAUK COUNTY, WISCONSIN

FILE NO.	510-209
PROJECT NO.	1198-807
DRAWING NO.	510209

CLIENT
MID-CONTINENT RAILWAY HISTORICAL SOCIETY
ATTN: DONALD MEYER
P.O. BOX 55
NORTH FREEDOM, WI 53951

SURVEYOR
SCOTT P. HEWITT
P.O. BOX 373
625 E. SLIFER STREET
PORTAGE, WI 53901
PHONE PORTAGE: (608) 742-7788
PHONE SAUK PRAIRIE: (608) 644-8877
FAX: (608) 742-0434
e-mail: surveying@grothman.com



LANDS BY OTHERS

N89°15'51"E (451.45') 456.36'

(193.20')
INGRESS & EGRESS EASEMENT (193-20)

VOL. 446, PG. 372

SW1/4 - NW1/4

(306.80')
"PERPETUAL EASEMENT FOR INGRESS & EGRESS"

H.O.S. BY M.S.A.

VOL. 350, PG. 389

APPROX. LOCATION OF FLOOD FRINGE LINE PER FEMA FIRM MAP NUMBER 55111C0378E & 5511C0359E.

N89°51'25"E (2627.27') 2627.35'

INV. = 865.41' INV. = 864.65'

14" CMP

14" CMP

14" CMP

14" CMP

14" CMP

14" CMP

14" CMP

14" CMP

14" CMP

14" CMP

14" CMP

14" CMP

14" CMP

14" CMP

14" CMP

14" CMP

14" CMP

14" CMP

14" CMP

14" CMP

14" CMP

14" CMP

14" CMP

14" CMP

14" CMP

14" CMP

14" CMP

14" CMP

14" CMP

14" CMP

14" CMP

14" CMP

14" CMP

14" CMP

14" CMP

14" CMP

14" CMP

14" CMP

14" CMP

14" CMP

14" CMP

14" CMP

14" CMP

14" CMP

14" CMP

14" CMP

14" CMP

14" CMP

14" CMP

14" CMP

14" CMP

14" CMP

14" CMP

14" CMP

14" CMP

14" CMP

14" CMP

14" CMP

14" CMP

14" CMP

14" CMP

14" CMP

14" CMP

14" CMP

14" CMP

14" CMP

14" CMP

14" CMP

14" CMP

14" CMP

14" CMP

14" CMP

14" CMP

14" CMP

14" CMP

14" CMP

14" CMP

14" CMP

14" CMP

14" CMP

14" CMP

14" CMP

14" CMP

14" CMP

14" CMP

14" CMP

14" CMP

14" CMP

14" CMP

14" CMP

14" CMP

14" CMP

14" CMP

14" CMP

14" CMP

14" CMP

14" CMP

14" CMP

14" CMP

14" CMP

14" CMP

14" CMP

14" CMP

14" CMP

14" CMP

14" CMP

14" CMP

14" CMP

14" CMP

14" CMP

14" CMP

14" CMP

14" CMP

14" CMP

14" CMP

14" CMP

14" CMP

14" CMP

14" CMP

14" CMP

14" CMP

14" CMP

14" CMP

14" CMP

14" CMP

14" CMP

14" CMP

14" CMP

14" CMP

14" CMP

14" CMP

14" CMP

14" CMP

14" CMP

14" CMP

14" CMP

14" CMP

14" CMP

14" CMP

14" CMP

14" CMP

14" CMP

14" CMP

14" CMP

14" CMP

14" CMP

14" CMP

14" CMP

14" CMP

14" CMP

14" CMP

14" CMP

14" CMP

14" CMP

14" CMP

14" CMP

14" CMP

14" CMP

14" CMP

14" CMP

14" CMP

14" CMP

14" CMP

14" CMP

14" CMP

14" CMP

14" CMP

14" CMP

14" CMP

14" CMP

14" CMP

14" CMP

14" CMP

14" CMP

14" CMP

14" CMP

14" CMP

14" CMP

14" CMP

14" CMP

14" CMP

14" CMP

14" CMP

14" CMP

14" CMP

14" CMP

14" CMP

14" CMP

14" CMP

14" CMP

14" CMP

14" CMP

14" CMP

14" CMP

14" CMP

14" CMP

14" CMP

14" CMP

14" CMP

14" CMP

14" CMP

14" CMP

14" CMP

14" CMP

14" CMP

14" CMP

14" CMP

14" CMP

14" CMP

14" CMP

14" CMP

14" CMP

14" CMP

14" CMP

14" CMP

14" CMP

14" CMP

14" CMP

14" CMP

14" CMP

14" CMP

14" CMP

14" CMP

14" CMP</